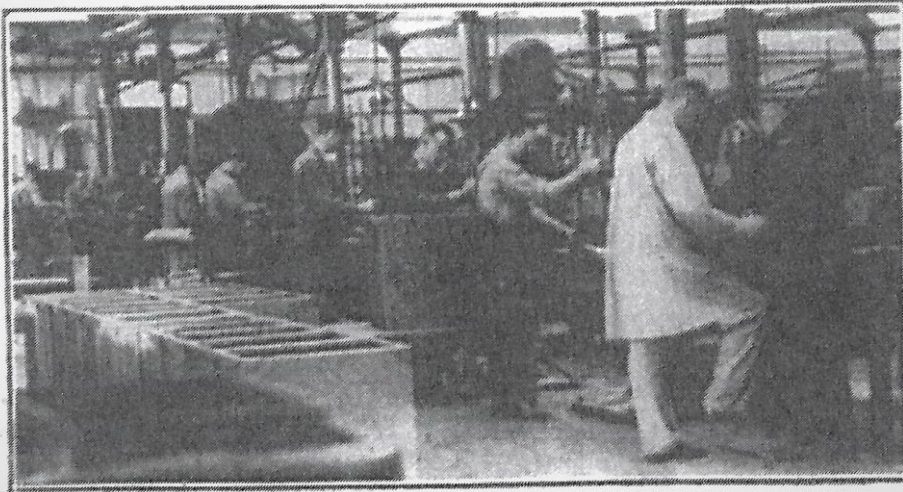


(4) Messrs. The Copeland Chatterson Co. Ltd.  
Dudbridge.



*A Corner of the Machine Room.*

**M**ESSRS. The Copeland Chatterson Co. Ltd., of Dudbridge, have a model factory and up-to-date offices where everything is carried out on modern lines, their factory being one of the best equipped in the country. Their aim can be summed up in two words "Labour Saving." Practically every branch of the work is done by machinery and the machines are all independently driven.

The rooms are large, airy and well lighted, and everybody is given every consideration in their work. On entering the premises one is immediately struck by the cleanliness, tidiness and the efficient business-like manner of the employees.

Although it is not perhaps generally known, the firm was established in Toronto, Canada, in the year 1890, by Mr. R. J. Copeland. Its trade spread to England and there was such a demand for the products that it was decided to build a factory in this country to cope with the work. Cope-Chats, as the firm is usually styled, do a large trade in labour-saving systems for use in offices and factories, and are the manufacturers of over 150 patents. They make a considerable amount of continuous stationery and provide many of the big business houses with all kinds of office equipment.

The firm are pioneers of the loose-leaf system and since starting at Dudbridge, the business has rapidly increased. Their premises have extended so that they now have a floor space of some 80,000 feet, there being room for further extension.

The Company at Dudbridge changed hands in 1913, when it was taken over by the present Directors, namely Messrs. W. S. Brown, J. A. Mann, T. E. Brown and G. J. Edwards.

There is an active social side to the business and the firm possess a very fine sports field, which is used by their Hockey and Cricket Clubs. A well furnished canteen is also available for socials and dances.

Although there is now no actual connection between Cope-Chats and the Canadian Company, they work closely together and representatives frequently exchange visits and ideas.

It takes half-a-million sheets to keep this modern plant working all day, which it has been doing until the recent international crisis interfered with business generally. All their printing presses are automatics and are worked from independent motors. Apart from the fact that this method does away with a considerable amount of impedimenta such as belts and pulleys, etc., it is economical in that when a machine is being made ready the motor is not working.

Their product necessitates a fully equipped machine shop, and the manufacture of loose-leaf ledgers alone requires over 3,000 different kinds of metal parts. Rivets and solder and the like are not generally used, but electric and oxy-acetylene welding is employed. All steelwork is stove enamelled and finished with finest cellulose. The firm manufacture many of the machines necessary for their work and their own patents are employed in offices and works.

Including the factory, office and sales staff the company employ about 400 hands. The Company has Branch Offices as well as agents in all large towns in the country as well as in Dublin, Australia, Canada, India, Portugal, Denmark and Holland. All employees work 45 hours a week and recently the new system of holidays with pay has been introduced.